



# Health Information Management Office in Kure Medical Center and Chugoku Cancer Center



Fumiko Matsufuru, HIMO<sup>1)</sup>, Mika Ozaki, HIMO<sup>1)</sup>, Keiko Kawamoto, HIMO<sup>1)</sup>,  
Megumi Kubo, HIMO<sup>1)</sup>, Chie Nishimura, HIMO<sup>1)</sup>, Toshiharu Kawamoto, MD, PhD<sup>1)</sup>,  
Kiyomi Taniyama, MD, PhD<sup>2)</sup>, Takashi Sugita, MD, PhD<sup>3)</sup>, Wataru Kamiike, MD, PhD<sup>4)</sup>

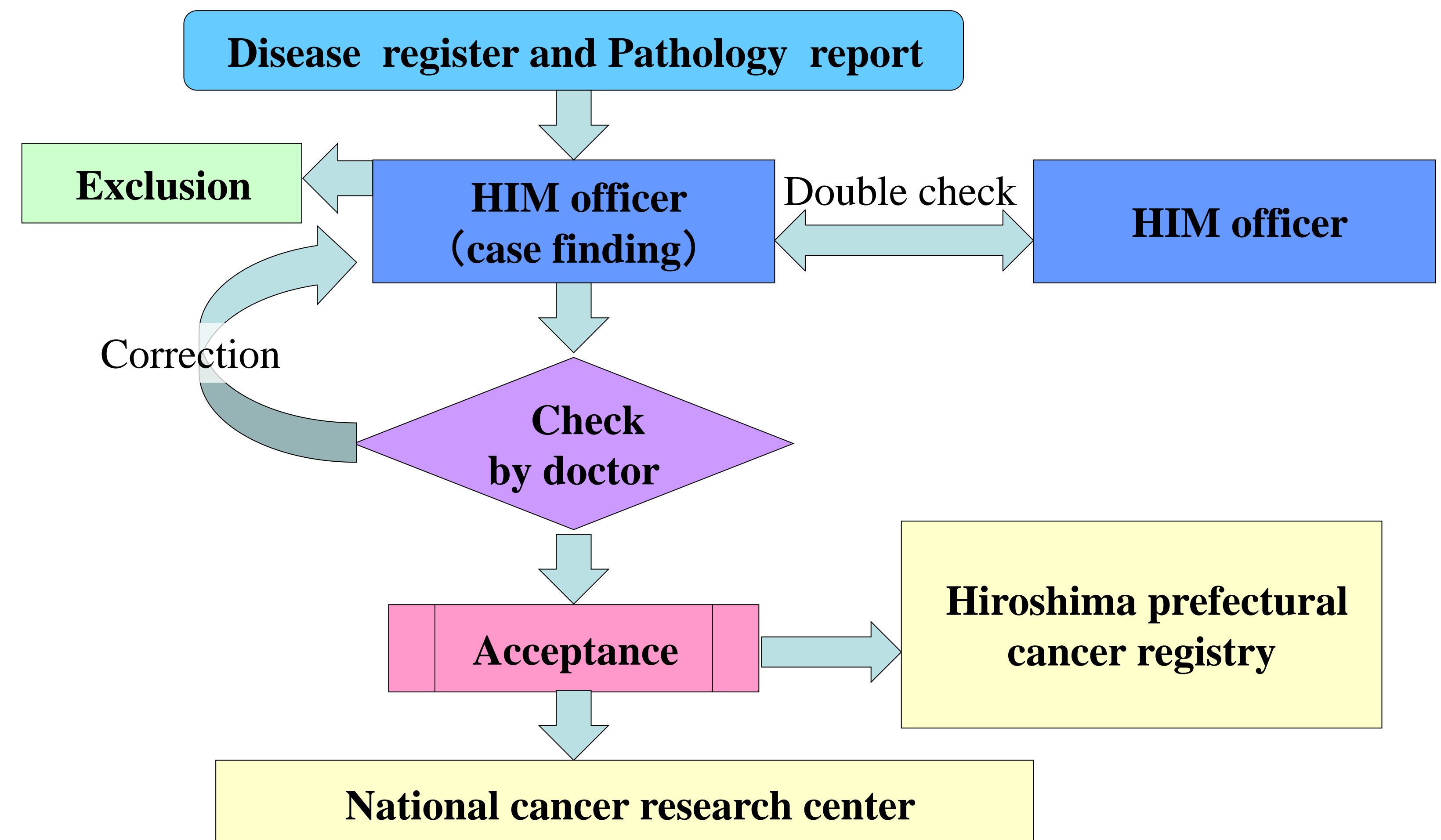
<sup>1)</sup>Health Information Management (HIM) Room, <sup>2)</sup>Institute for Clinical Research, <sup>3)</sup>Vice-President and  
<sup>4)</sup>President, National Hospital Organization Kure Medical Center and Chugoku Cancer Center, Kure, Japan.

## History of HIM in KMC CCC

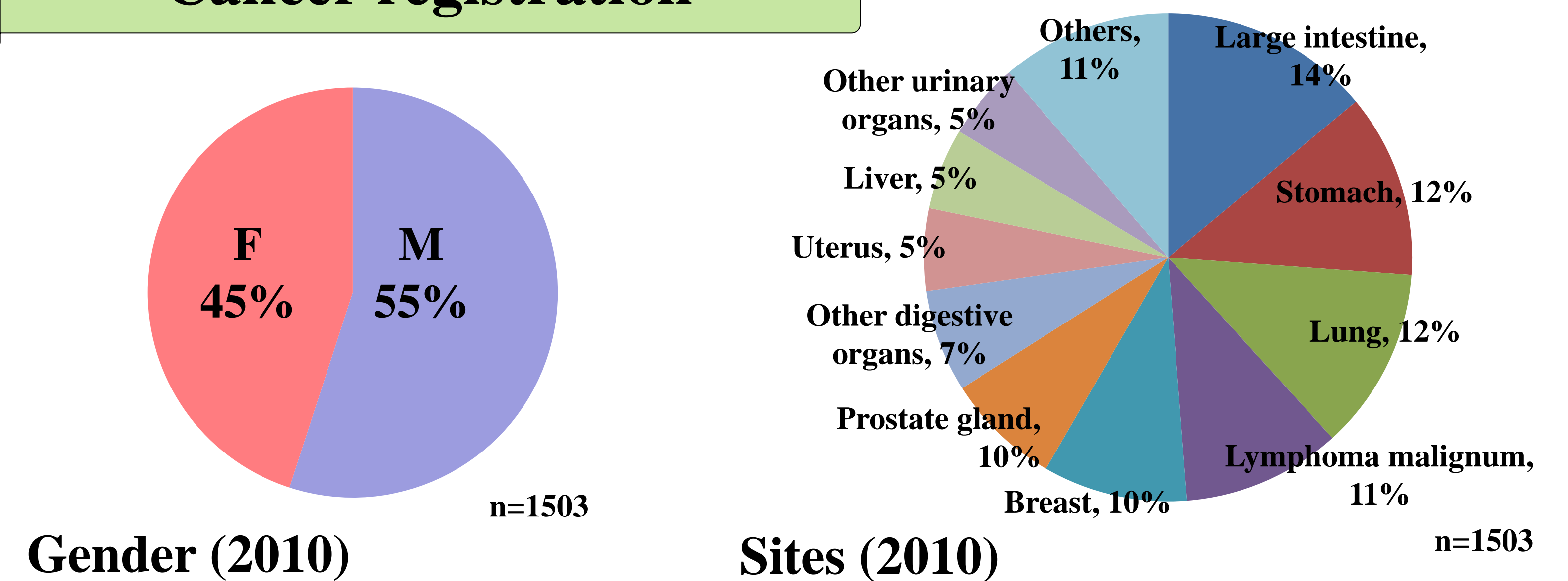
- 1969:
  - Health Information Management (HIM) Office was established
  - All records were constructed under "One ID", one medical chart per patient
  - Cancer registration started
- 1980:
  - Registration of medical history with International Classification of Diseases (ICD) started
- 1989:
  - Medical records were divided into two types for outpatient and inpatient
- 2005:
  - Electronic ordering system started
  - Inspection of medical records by the chief doctor started
- 2005:
  - Electronic Medical Record System (EMRS) started
- 2006:
  - Diagnosis Procedure Combination (DPC) was installed into EMRS
- 2011:
  - Old medical references are being saved in EMRS by scanning
  - Ideal EMRS has been established

## Management on Cancer Diseases

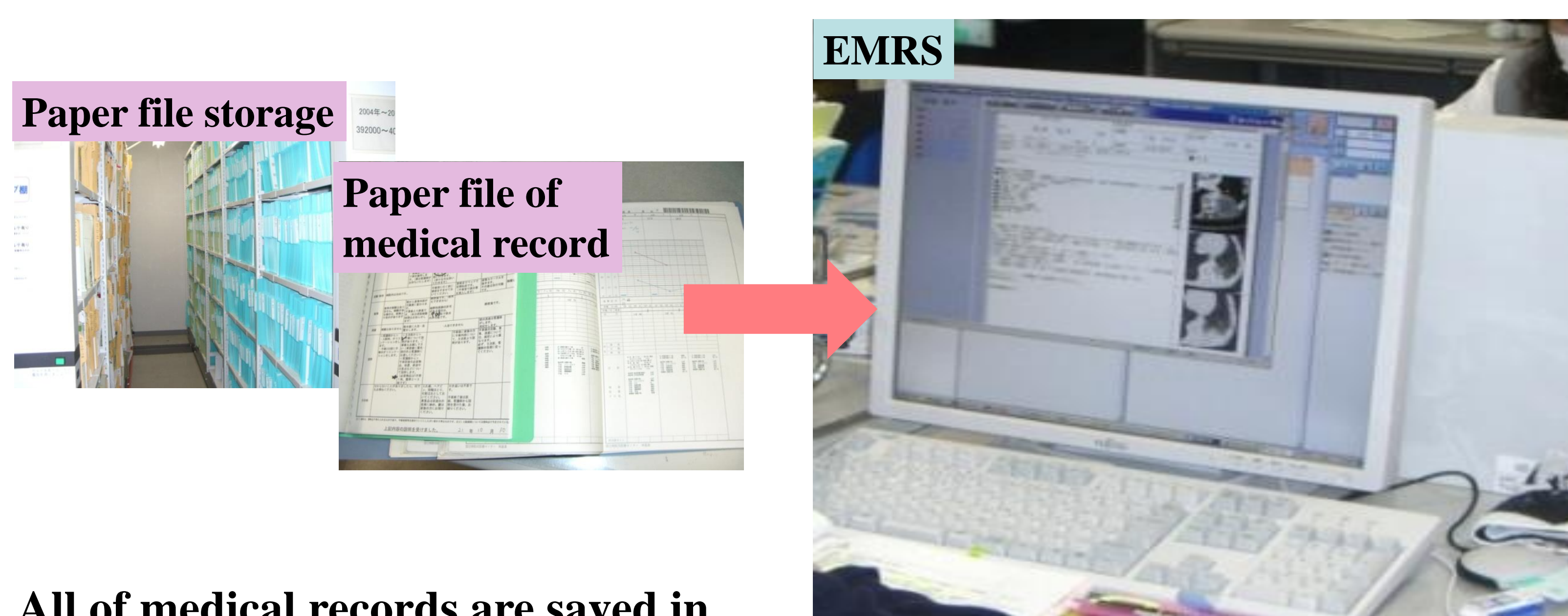
### Flow of cancer registration



### Cancer registration

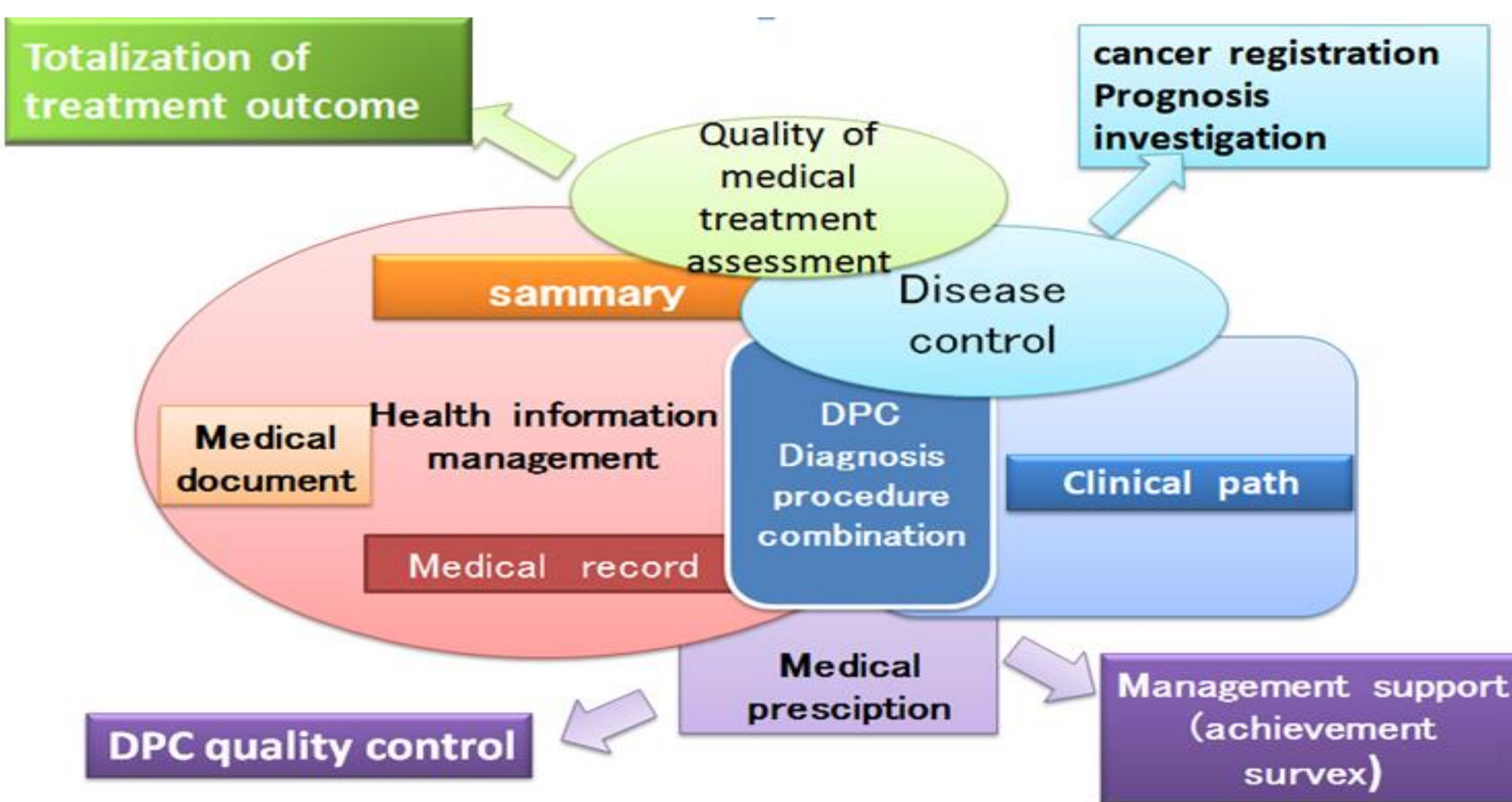


## Promotion of Paperless System

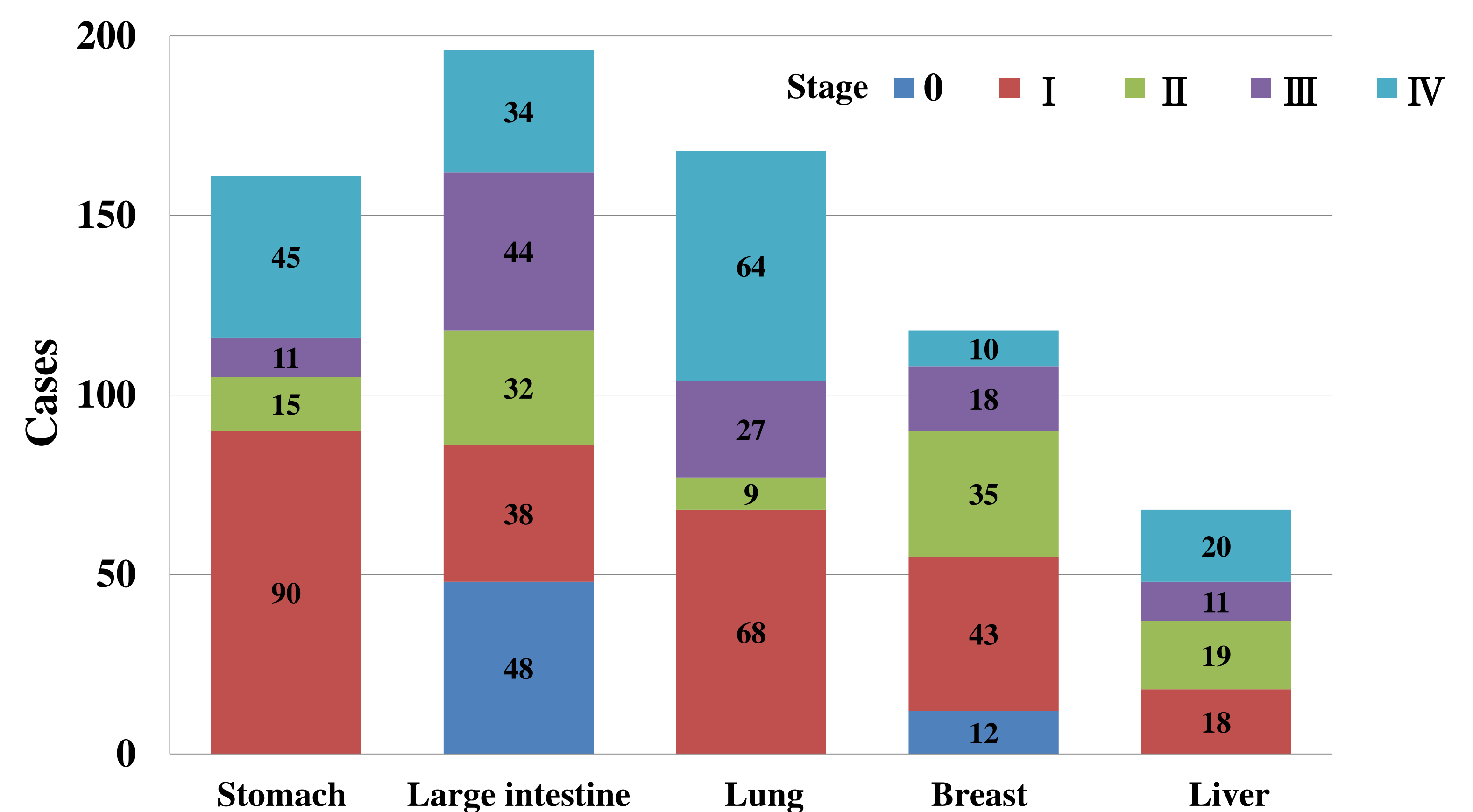


All of medical records are saved in EMRS. These information can be shared, stored and transmitted safely with individual identification function.

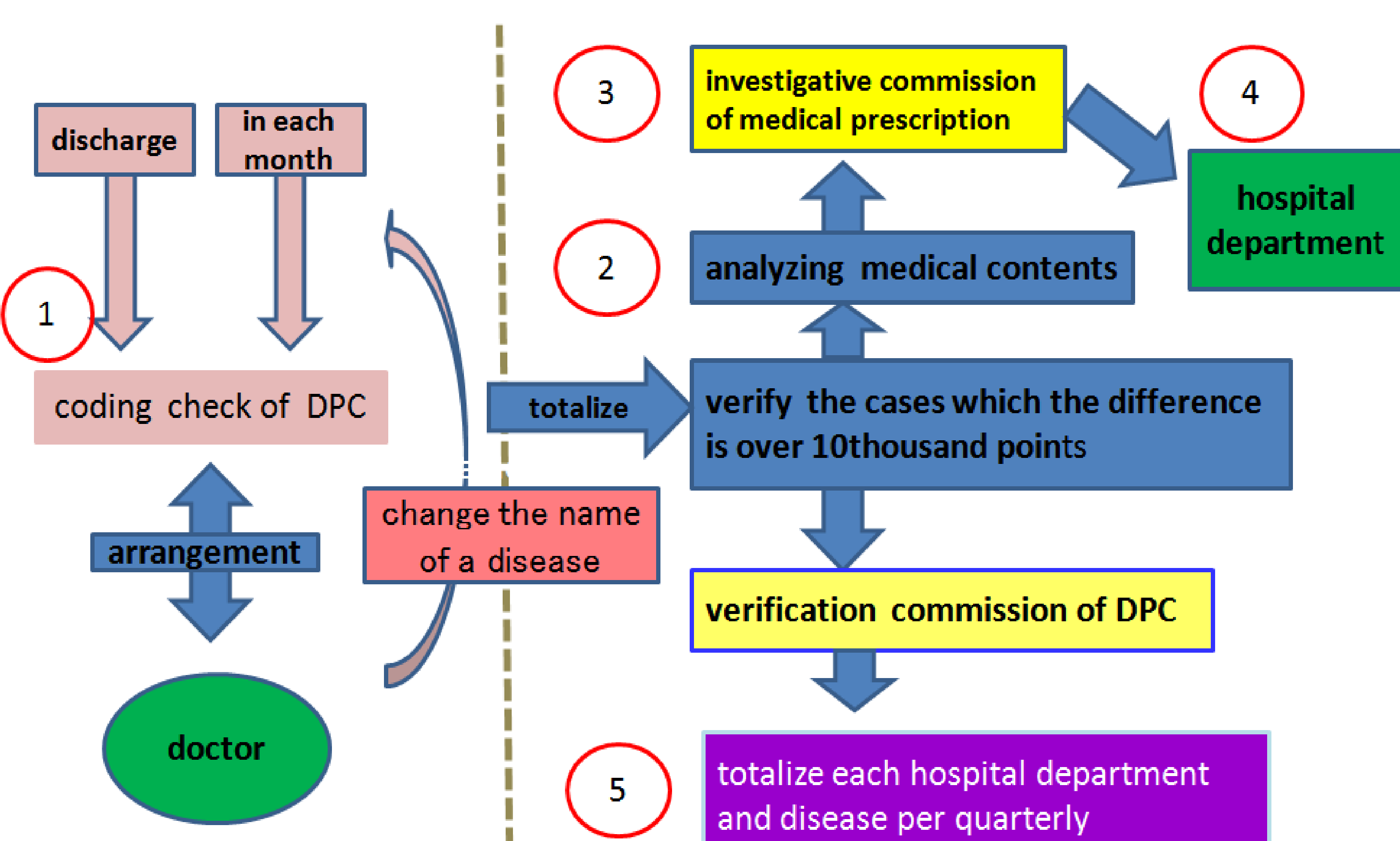
## Mission of HIM Office



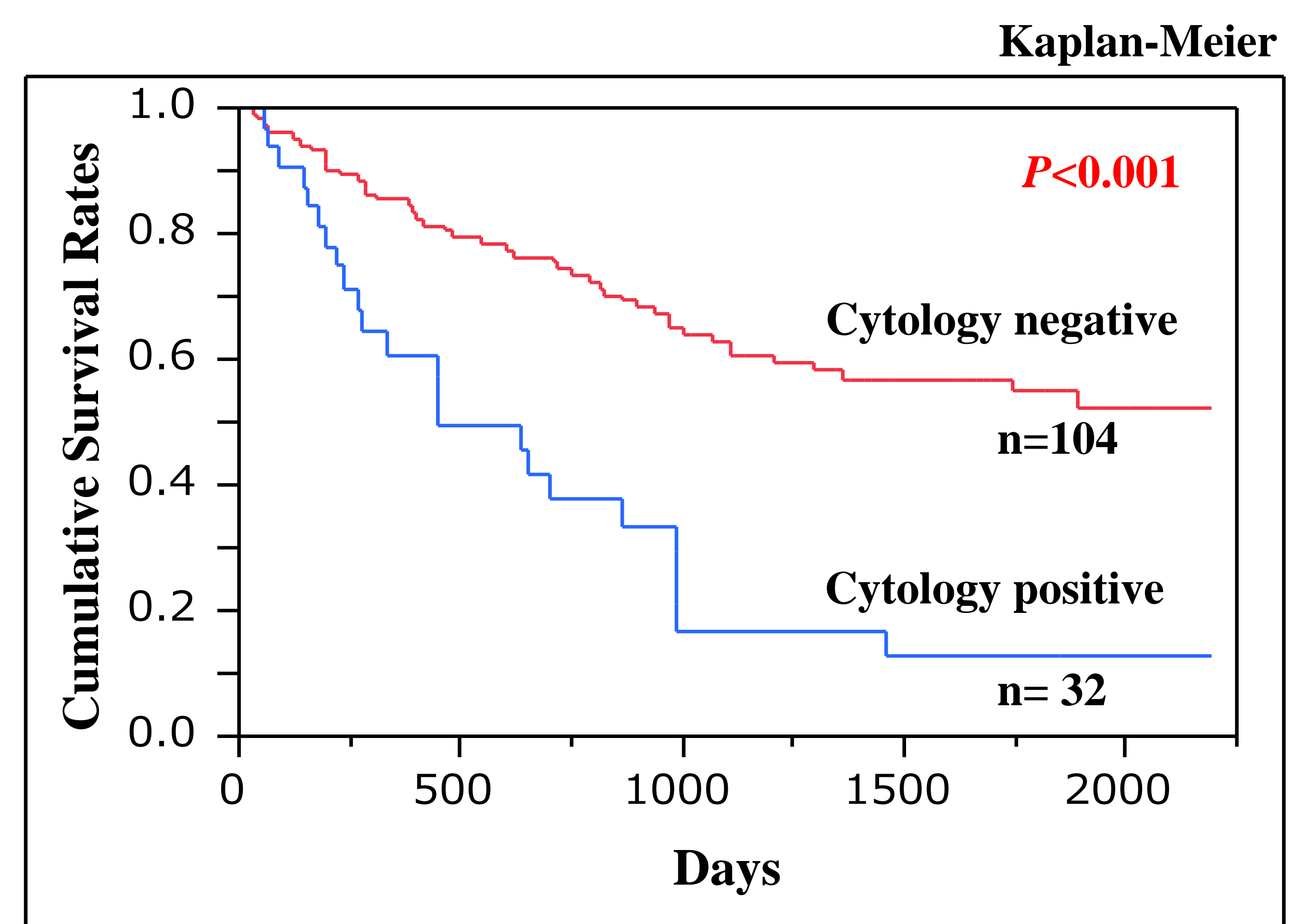
## Stages of registered cancers (2010)



## Coding Check of DPC



## Data on Prognosis



Predictive values of peritoneal cytology in colorectal cancer patients (Stage III & IV)